

31st January 2025

## From the Principal- Mrs Jenkins



Dear KGPS Families,

A warm welcome to all our families, both new and returning, as we embark on the **sixth year of education at KGPS!** We are thrilled to welcome **90 new students** and their families into our growing school community.

I trust you had a restful break and enjoyed quality time with your children.

We commenced this academic year with **481 students, 23 classes**, (33 teaching staff), and 18 education support/admin staff. A special thank you to our dedicated staff members who invested time over the holiday break to prepare for the 2025 school year.

Our newest members to primary school, the **Preps**, have settled into their new environment, demonstrating an understanding of school routines and expectations.

**Well done, Preps!**



### Soft Starts and Attendance

At KGPS, we believe in a gentle start to the school day. Our 'soft start' period occurs between **8:45am-9:00am** (or **8:30am-8:45am on Wednesdays**). During this time, students can engage in social activities, review the visual schedule, read, and ease into the day. **Parents/carers are also welcome to pop into the classroom during this time.** It has been lovely to see so many of you in our learning spaces over the past few days.

Please note that formal teaching and learning commences at **9:00am** (or **8:45am on Wednesdays**). We encourage students to arrive during the soft start time to ensure a smooth transition into the learning environment.

### Communication at KGPS

Over the first few weeks of this term, we conduct two important **parent/teacher events** to facilitate early communication between classroom teachers and parents:

#### 1. Introductory Meetings – Wednesday 12th February

These meetings provide an opportunity for parents to meet their child's teacher on a one-on-one basis and exchange key information to ensure a smooth start to the year. If you are unable to attend, please contact your child's teacher to arrange another time.

📌 **Early Finish at 1:00pm** on this day to accommodate these meetings.

#### 2. Prep and New Parent/Carer Curriculum Information Evening – Wednesday 12th February, 6pm-6:40pm

(same evening as Introductory Meetings- if you are planning on attending the information session please book your Introductory Meeting before 6pm)

This session provides an overview of our **curriculum programs**, opportunities for parental involvement, and a summary of **2024 data and achievements**. Existing families welcome (however much of this information has been presented at previous Information Sessions).

Our KGPS Information Handbook will be distributed at this information session as well as being shared via Compass with all families

📌 **Early Finish at 1:00pm** on this day. **ALL CHILDREN WILL BE DISMISSED AT 1:00pm.** Team Kids will offer an afternoon program for those requiring childcare.

### Changes to Parking on Homeleigh Road - NO KISS AND GO

After **extensive consultation** between **School Council, the Greater Dandenong Council, and the school**, the decision has been made to **remove the Kiss and Go zone** due to challenges at school pick-up times. With our **growing school population**, it is no longer sustainable to continue the system safely.

#### ◆ What has changed?

The **Kiss and Go area is now a 2-hour parking zone.**

#### ◆ What should I do?

- If parking spaces are available, you may **park** in the area (please do not form a queue).

- We **recommend parking at Woolworths** or in neighbouring streets (ensuring you do not block driveways) and walking to a **pre-arranged meeting spot** such as the playgrounds, basketball court, or school gates.
- Families of **Years 3-6 students** are encouraged to consider **walking, riding, or scootering** home if they live nearby.

#### ◆ Will there be supervision?

- **Teachers and Education Support staff** will be on duty in the yard and at school gates **until 3:45pm (Mon, Tues, Thurs, Fri) and 3:15pm (Wed)**.
- Before school, staff will also be on duty from 8:45am, so students may walk into school independently from Homeleigh/Chapel Road.

#### ◆ Where can I park on Homeleigh Road?

- Please refer to the **attached diagram on page 3**. The green line indicates where parking is available.
- This decision prioritises the **safety of all children**. We appreciate your support in adjusting to these changes.

### Assemblies

Assemblies are held every Friday at 9:10am in the gym. Families are warmly invited to join us!

📌 First assembly: Friday 9th February - for year 1-6 students.

📌 Prep students' first full assembly: Friday 14th February.

### Welcome Picnic and Leaders Badge Presentation - Save the Date!

📅 **Friday 28th February, 5:00pm-7:00pm**

Our Annual Welcome Picnic is a wonderful opportunity to connect with the school community and meet other families. At this event, our **Year 6 leaders and 2025 SRC members** will be formally presented with their leadership badges.

Keep an eye on the newsletter for further details!

### 2024 Yearbook - Celebrating 5 Years at KGPS!

Our **beautiful 2024 yearbook** is still available—but only for a limited time! Don't miss out on this special keepsake celebrating five wonderful years at KGPS.

#### 📖 How to Purchase:

- ✓ Available at the front office
  - ✓ Order via Compass (**Canteen platform**)
- Grab your copy before they're gone!*

### 2025 Parent Payments

School fees and contributions were distributed at the end of 2024. To assist with budgeting, building projects, and student resources, we kindly request payment of your contribution by **Friday 7th March**.

🙏 **Thank you** to the families who have already completed their payments via Compass. Your support directly enables the continued development of our **school grounds and programs**.



### HATS

Students **must** wear their KGPS hat which is part of your school uniform. KGPS hats can be purchased at the office for \$18.50. Please note: baseball or peaked caps and sun visors are not considered a suitable alternative, as they do not protect the ears, cheeks or neck.



### Year of the Snake!

Goodbye Dragons, hello to the Year of the Snake. In Chinese culture, the snake symbolises wisdom, intuition, and transformation.

The Year of the Snake is the birth year of many of our Year 6 students. It is a year to embrace knowledge, adaptability, and personal growth. May this year bring you intelligence in decision-making, success in your endeavours, and harmony in life.

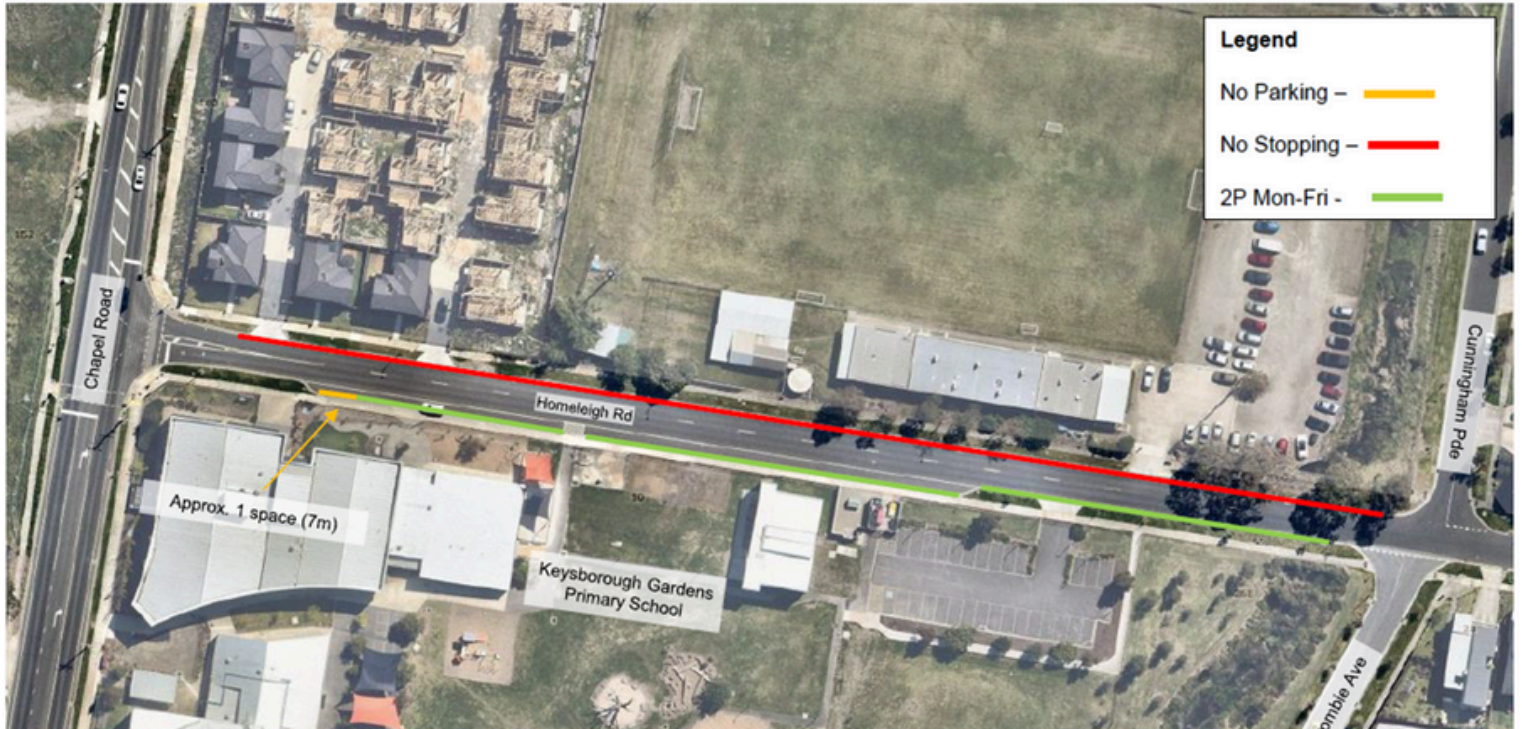
Wishing those who celebrate a Happy Chinese New Year!

We look forward to another exciting and successful year at KGPS!

Kind regards,  
*Sherri*

**Sherri Jenkins | Principal**

# Homeleigh Road Parking-



## 2025 Terms

<p><b>Term 1</b> 30th January to 4th April <small>Years 1-6 start: 30/01 @ 9am Prep's start: 31/01 @ 9:30am</small></p>	<p><b>Term 2</b> 22nd April to 4th July</p>
<p><b>Term 3</b> 21st July to 19th September</p>	<p><b>Term 4</b> 6th October to 18th December</p>

**Student Free Days & Public Holidays:**

- Friday 7th March (Curriculum Day)
- Monday 10th March (Labour Day)
- Friday 18th April (Good Friday)
- Monday 21st April (Easter Monday)
- Friday 25th April (ANZAC Day)
- Monday 12th May (Curriculum Day)
- Monday 9th June (King's Birthday)
- Tuesday 4th November (Melbourne Cup)

**BASKETBALL**      **SOCCER**

**AFTER SCHOOL SPORTS**

**CRICKET**

**KIDS PARTIES**

- SPACE JUMP
- SPORTS & JUMP
- DODGEM CARS
- NERF WARS
- BUBBLE SOCCER
- LASER TAG

**INDOOR SPORTS**  
SPRINGVALE

**FREE TRIAL SESSION**

**5:30pm-6:30pm**  
Mondays & Wednesdays  
5-7 year olds | 8 - 11 year olds

**Tel: 9547 2555**  
**\$15/sessions**

[springvaleindoorsports.com.au/junior-sports](http://springvaleindoorsports.com.au/junior-sports)

**Caroline Etienne Ballet Centre**  
\* HALLAM \* KEYSBOROUGH

Mob: 0419 575 401 | Email: [ceballetcentre@gmail.com](mailto:ceballetcentre@gmail.com)

Director: Caroline Etienne (A.I.S.T.D)

CLASSICAL | JAZZ | HIP HOP | CONTEMPORARY

[ceballetcentre.com.au](http://ceballetcentre.com.au)

# Diary Dates

## February 2025

- Wednesday 12th - **Parent Intro Meetings Prep-Year 6 1:10am - 6:40pm**  
**(1:00pm student dismissal)**  
**Prep and New Parent/Carer Curriculum Information**  
**Evening (6:00pm- 6:40pm)**
- Friday 7th - **Assembly 9:10am**
- Friday 28th - **Whole School Welcome Picnic & Badge Presentation**

## March 2025

- Tuesday 4th - **School Photos**
- Friday 7th - **Curriculum Day (no school)**
- Monday 10th - **Labour Day (no school)**
- Monday 12th - NAPLAN Begins ( Yr 3 & 5)
- Friday 21st - **Harmony Day**
- Monday 24th - Wednesday 26th - Year 4 Camp Gundiwindi

## April 2025

- Friday 4th- **Last day of Term 1**
- Monday 21st - **Easter (no school)**
- Tuesday 22nd- **First Day of Term 2**
- Friday 25th - **ANZAC Day (no school)**
- Monday 12th - **Curriculum Day (no school)**

## May 2025

- Monday 12th - **Curriculum Day (no school)**

Whole School Event

No School

*Our School Assembly is held every Friday morning at 9:10am*

## Communication with school staff

In August last year, a new law called the Right to Disconnect was introduced for all workplaces.

This means that our staff now have the right to enjoy their evenings and weekends without being expected to respond to messages or emails.

Teachers and Education Support staff are not required to reply to phone calls, emails, or Compass messages from parents or students after 5pm or on weekends.

We ask that families understand and respect these boundaries.

Any non-urgent communication will be answered within 2 working days, and urgent matters will be addressed within 24 hours or the next working day.

Please email: [keysborough.gardens.ps@education.vic.gov.au](mailto:keysborough.gardens.ps@education.vic.gov.au) and your email will be redirected.

Thank you for your understanding and support!

## Mobile Devices

In line with the Department of Education's Mobile Phone Policy, all phones bought to school must be switched off and given to teachers for safe keeping.

For the purpose of this policy 'mobile phones' refers to any device that may connect to or have a similar functionality to a mobile phone such as a smart watch.

**Smart watches must have their internet connectivity switched off during school times.**

When a student is not complying with this mobile phone policy, we will be required to follow a process in line with our existing student engagement policies.

[Mobile phone Policy.](#)



## Facebook

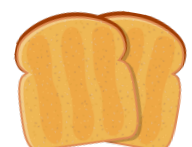
Please like our Facebook page. This page is used by the school to share events and updates at the school.

[KGPS Facebook](#) and Instagram.

Any other Facebook pages are not officially authorised by representative at the school.

## Breakfast Club

Breakfast club will re-open Thursday 6th February.



## Lost Property

Please make sure all uniform items are clearly labelled, as many items in lost property have no name!



## Student Supervision

Our school grounds are supervised by school staff at the following times:

- Before school from 8:45am until 9am (Wednesday from 8:30am)
- Throughout recess and lunch
- After school from 3:30pm until 3:45pm.

Do NOT leave your child alone at school before 8:45am. Book them into TeamKids!



Thank you for arriving at school on time!

## Contact Details

It is important the school has your most current phone, home and email details.

If you change any details please tell us as soon as possible.



## Out of School Hours Care

TeamKids is our Before & After School Provider.

The hours of operation are:

Before School Care: 6:45am to 8:45am

After School Care: 3:30pm to 6:30pm

After School Care: 3:00pm to 6:30pm (Wednesday)

Holiday Programs run each term holiday

You can book on <https://www.teamkids.com.au/venues/keysborough-gardens-primary-oshc/>



# Uniform Reminders

The wearing of uniform is compulsory at Keysborough Gardens Primary school.  
All our uniform can be purchased at PSW, Unit 1, 9-11 South Link, Dandenong South, 3157 or  
online [click here](#)



polo shirt



long sleeve shirt



jumper



zip up jacket



bag



shorts



pants



skort



summer dress



broad brim hat



school beanie



winter tunic



white skivvy



navy or white socks



navy tights



black shoes or  
runners

## These items are not permitted as part of our uniform

