

From the Acting Assistant Principal - Mr Gliddon

Dear KGPS Families,



Year 4 Community

It's hard to believe we are already in Week 7, with Term 1 progressing at a rapid pace. Our Year 4 students have been actively engaged in their 'How We Organise Ourselves' Unit of Inquiry, exploring the impacts and ethical considerations of trade. Through discussions on the roles of producers and consumers, they have developed a deeper understanding of fairness within economic systems. To bring these concepts to life, students have collaboratively established a classroom economy, reinforcing positive behaviours while applying their learning in a practical and meaningful way.

Their presentation highlighted the incredible work happening in our school, reinforcing our dedication to continuous improvement and high standards in teaching and learning.



School Review

Preparations for our upcoming school review are well underway at KGPS. During our recent Curriculum Day, staff engaged in a collaborative reflection on the school's strengths across various key areas. This process also provided an opportunity for all staff members to contribute their insights and potential recommendations for the school's future direction over the next four years. It was invaluable coming together as a team to celebrate our achievements and identify areas for continued growth. There was a strong sense of enthusiasm about the journey ahead. We look forward to gathering input from our students and wider community throughout the term to ensure a shared vision for the future.

NAPLAN

Good luck to our NAPLANers! This year's Naplan assessments commenced this week for Year 3 and 5 students. These assessments are one of the many tools used to provide valuable information on our school and the progress of students.

Year 3 and 5 students - we know you will approach these assessments with confidence. We are already proud of your efforts.

SRC Leaders

Hi everyone,

We are the Year 3 SRC leaders, and we want to remind you that Active Travel Month finishes next Friday, 21/3!

Remember, Active Travel includes walking, riding, scooting, or skating, and you can start from Woolworths or another meeting spot. Each active trip counts as one day, so don't forget to tick your Active Travel table on the letter sent home.

On Thursday 20th March, everyone who actively travels will receive a free icy pole! The following week, at the Week 9 Assembly, we will announce the winner of Active Travel Month, who will receive a prize!

Thank you for reading, and we hope you can take part.

From the Year 3 SRC,

Zain, Flynn, Harper, and Kaia



Mrs Jenkins and Mrs Matlock - Excellence

Last week, Mrs Jenkins and Mrs Matlock demonstrated Excellence at the Regional Principal's Conference. They proudly represented our school and took the bold step of being risk takers by sharing innovative practices and insights with educational leaders from across the region.





Ramadan

In our vibrant multicultural community, Ramadan has been welcomed, a significant period observed by many of our students and their families. Ramadan, a holy month in the Islamic calendar, is marked by fasting, reflection, and community. This observance perfectly aligns with the PYP's emphasis on open-mindedness and cultural appreciation, fostering a globally minded perspective among our learners. This is a splendid opportunity for all of us to embrace and celebrate the diversity that enriches our learning environment, demonstrating respect, empathy, and an inquisitive spirit towards different cultures and beliefs.

Holi- Festival of Colours

This weekend is also a time in the Hindu calendar to celebrate Spring (in the Northern Hemisphere) and new beginnings in a vibrant colourful festival.



International Women's Day

Over the weekend, we celebrated International Women's Day with the theme "For All Women and Girls." This is a day to recognise and appreciate the contributions of women in our community and around the world while also reflecting on the importance of equality for everyone. While progress has been made, we know that women and girls still face challenges in many areas of life, including education, work, and leadership. As a school, we are committed to fostering a culture of respect, fairness, and opportunity for all. By learning about and celebrating the achievements of women, we help build a future where everyone, has the chance to succeed and thrive.



Cultural Diversity Week



Harmony Day Parade 21st March

Cultural Diversity Week is a time to celebrate Australian multiculturalism and we are so proud of our very diverse community. The message of Cultural Diversity Week is 'Embrace the journey - shape our future'. Did you know that 80% of our students speak another language other than English at home? Forty different languages are spoken in our community. At Keysborough Gardens Primary School we embrace inclusiveness, respect and belonging for everyone, regardless of our cultural or linguistic background. On Friday 21st March come along dressed in your traditional cultural dress or orange to celebrate the history of your family to show that WE ALL BELONG.

URGENT
DONATION

Easter Raffle - DONATIONS REQUIRED

It's that time again for our annual Easter Raffle! We would love each family to make an Easter-themed donation for our raffle prizes—chocolates, activities, and more. Raffle tickets are on sale now for \$2.

 *Easter Raffle coming soon!*

We would love as many Easter donations as possible!

Please drop your donations at the office.



Kind regards,
Simon

Simon Gliddon | Assistant Principal

2025 Terms

Term 1

30th January
to
4th April

Years 1-6 start: 30/01 @ 9am
Prep's start: 31/01 @ 9:30am

Term 2

22nd April
to
4th July

Term 3

21st July
to
19th September

Term 4

6th October
to
18th December

Student Free Days & Public Holidays:

- Friday 18th April (Good Friday)
- Monday 21st April (Easter Monday)
- Friday 25th April (ANZAC Day)
- Monday 12th May (Curriculum Day)
- Monday 9th June (King's Birthday)
- Tuesday 4th November (Melbourne Cup)

SCHOOL SAVINGS BONUS

The Victorian Government has granted \$400 to every student enrolled at a Government School. However accessing these funds can only be through the portal via this [link](#)

You will have received an email from the Department of Education School Savings Bonus team with your login and password. If you have not received this or require it to be re-sent please contact the SSB team on 1800 338 663. The school office unfortunately does not have access to this information and therefore are unable to assist with your login details.

The SSB funds can only be utilised for uniform and activities (eg. camps, swimming, excursions and incursions) **Please note: SSB cannot go towards Curriculum Contributions.** To assist our families with the payment for these events we kindly ask all parents and carers to transfer the full these funds (eg. \$400) to the school (or your remaining balance if you have already utilised some for uniform), by allocating it to 'Activities.'

This will reduce the amount parents/carers normally would pay for activities .

Once you've transferred funds to the school we will automatically adjust/reduce events allowing you to consent in Compass.

VOLUNTEERS NEEDED

HELP!! Canteen Volunteers Urgently Needed.

We need your help to help assist Chum our canteen manager in the canteen.

Please click on the link [here](#) to fill in the form.

Please ensure you have a Working With Childrens Check.

Without volunteers the cannot cannot open.

thank you
so much

Gratitude

**We are so grateful to the following
parents for helping out in the
canteen:**

Veronica, Daniela, Stella, & Chloe.

Diary Dates - Term 1 2025

March 2025

- Tuesday 13th - Yr 1, 2 & 4 St Johns Incursion
- Monday 17th - Yr 2 SES Visit
- Monday 17th-23rd -Harmony Week
- Thursday 20th - Yr 5/6 Interschool Sport 9:15am-11am
School Council 5.30pm
- Thursday 20th - **Active Travel Day**
- Friday 21st - **Harmony Day Parade**
- Monday 24th to Wednesday 26th - Year 4 Camp Gundiwindi
- Thursday 27th - Yr 5/6 Interschool Sport 9:15am-11am

April 2025

- Thursday 3rd - Year 3 Superhero In You Incursion
- Year 2 Mind and Body Incursion
- Friday 4th - **Last day of Term 1 (3:30pm dismissal)**
Easter Raffle Drawn
- Monday 21st - **Easter Monday (no school)**
- Tuesday 22nd - **First Day of Term 2**
RACV Incursion Prep-Yr 1
- Friday 25th - **ANZAC Day (no school)**
- Monday 28th - Year Six - Positivity, Leadership and Activated Youth incursion.

May 2025

- Wednesday 7th - Mother's Day Stall
- Thursday 8th - Yr 5/6 Winter Interschool Sports
Mother's Day Afternoon Tea/ Mother's Day Stall
- Friday 9th - Prep - Yr2 Cross Country
- Monday 12th - **Curriculum Day (no school)**

Whole School Event

No School

Our School Assembly is held every Friday morning at 9:10am

ACTIVE TRAVEL MONTH

JOIN US FOR ACTIVE TRAVEL MONTH! WALK, RIDE, SCOOT, OR SKATE TO SCHOOL FOR A CHANCE TO WIN A SPECIAL PRIZE!

- EVERY ACTIVE TRIP COUNTS AS ONE DAY.
- PARK FURTHER AWAY AND WALK THE REST TO PARTICIPATE.
- NATIONAL RIDE2SCHOOL DAY: **THURSDAY, MARCH 20** - GET A FREE ICY POLE FOR PARTICIPATING!

TRACK YOUR DAYS USING THE PROVIDED TABLE AND RETURN IT ON MARCH 21 TO BE ELIGIBLE FOR THE PRIZE.

LET'S GET MOVING!

**03/03 -
21/03**

STUDENT
REPRESENTATIVE
COUNCIL



ACTIVELY TRAVEL ON
THURSDAY, **MARCH 20**

Get a **FREE** icy pole for
participating!

Cuppa and chat

Tuesday 1st April
2:30pm

All help welcome to assemble Easter baskets from donations provided for our school Easter Raffle.

Keysborough Gardens

 **KEYSBOROUGH GARDENS PRIMARY SCHOOL**

Purchase your Easter Raffle tickets now!

\$2 each - Great prizes to be won!!!!

Click on the Canteen icon on Compass and select 3rd April to buy.

CURIOUS KIDS PLAYGROUP @
KEYSBOROUGH GARDENS PRIMARY SCHOOL

COME AND JOIN US!

Starting Tuesday 11th February 2025

EVERY TUESDAY DURING SCHOOL TERMS

9:30am - 10:30am

IN OUR LIBRARY

ANY FAMILIES AND CHILDREN 0-5 WELCOME!

10 Homeleigh Road, Keysborough
97926800



SCHOOL ATTENDANCE



On average there are 200 days in a school year

When your child misses...

That equals

1 day per fortnight

20 days each year

1 day per week

40 days each year

2 days per week

80 days each year

3 days per week

120 days each year

Good Attendance:

Less than 10 days each year



High Absence:

10 - 20 days each year.

This is below average



Chronic Absence:

20-30 days each year.

This is poor attendance



Extreme Absence:

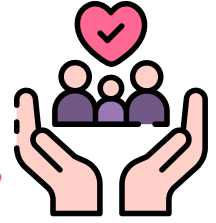
More than 30 days each year.

This is extremely low attendance





WELLBEING AT KGPS



Striving for Excellence - in Learning & Life!

Term 1, Week 7

As we move through the term, it's a great time to check in on our wellbeing. At Keysborough Gardens Primary School, we continue to focus on fostering a positive and supportive environment for all students.

This week, we continue to encourage students to practice the value of **respect**—showing kindness, listening to others, and valuing different perspectives. Demonstrating respect helps build strong relationships and a welcoming school community. Families can support this at home by encouraging respectful conversations, active listening, and appreciation for each other's thoughts and feelings. Small acts of respect can make a big difference!



Buddy's BowWows

Buddy has been busy visiting learning communities, meeting new friends, and reconnecting with familiar faces! He loves all the pats and attention. As he continues his work, he kindly reminds everyone to please follow the Three Expectations to help him feel safe and relaxed at school.



A Word from the Wellbeing Leaders

Hello from your Wellbeing Leaders: Evie, Charlie, Gracie and Harley!

It has been so exciting seeing the Prep students enjoying the new playzone, also known as the "Keysie Village".



It is amazing to see how the students are using the space with respect and care. Remember that during Term 1 this area is only for Preps. There will be opportunities for older students to use this zone throughout the year.

We would like to remind everyone of a few essential expectations when playing in this new zone:

- Keep the pebbles inside the rock area and not on top of the rocks.
- Be mindful of the new plants - avoid running through the garden/tan-bark please.
- Show respect by taking care of the play equipment. Make sure it is being used appropriately and packed away when the bell rings.
- We play inside the cubbies and don't climb on top of them.
- We respect each other's games and share the space and resources fairly.



Term 1 Enrichment Club Highlights

Enrichment Clubs at KGPS provide a fantastic opportunity for students to explore new hobbies, make friends, and connect with different teachers—all while supporting their wellbeing. Each term, we offer a diverse range of clubs, led by both our dedicated KGPS staff and external providers.

In Term 1, students had the chance to take part in Soccer and Street Dance, both run by expert external coaches, as well as Mindfulness Colouring, Volleyball Club, Choir, and Library Club, all led by our amazing KGPS teachers.

What's happening next term?



We're excited to introduce a fantastic lineup of Enrichment Clubs for Term 2!

- Running Club with Mr. Blundell (P-6)
- Lego Club
- Dance Club (Prep)
- Mindfulness Club with Miss Littlejohn (P-6)
- And many more.

Plus, our weekly Choir and Library Clubs continue to offer great opportunities for students to get involved. Keep an eye out for our fortnightly timetables displayed around the school for more details—we can't wait to see lots of students participating!

After School Restraint Collapse

Source: The Klidd Clinic



Parents often report the "after school melt-down" - children either come home extremely volatile and emotional, or become quiet and withdrawn.

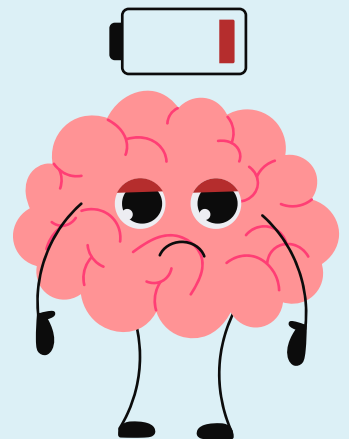
Why does this happen?

Firstly, the social and behavioural expectations of children are far greater at school than they are at home. Children have to use a lot of energy and resources to pay attention, follow directions, sit still, retain information, manage friendships, please their teacher...the list goes on.

When it comes time to head home, it can be challenging for some children to conjure up the same amount of resources required to stay regulated.

Secondly, they've had to manage all of this without their primary attachment figure - their parent/caregiver. This means that once school has finished, they may feel exhausted from spending 6-7 hours dealing with some pretty tough stuff on their own.

Thirdly, they feel like they can melt down at home with their caregivers, because this is their safe place, where they know that they are supported and loved. No matter how big the meltdown, they know that their caregiver will be there to pick up the pieces.



How can you help your child?

- Spend an extra 5-10 mins with them before school. ☺ ☺
- Send them to school with notes in their lunchbox, or a picture of you.
- Instead of focusing on the goodbye, and telling them all of the fun things they will do that day, redirect their attention to your next hello, e.g. "Have a great day – when I pick you up, shall we go to the park or library?" ☺ ☺
- Pack a snack for the trip home.
- Delay asking them about their day. Wait until they've had some time to unwind.
- Get to know what your child needs once home (which can change from day to day) - do they need time to relax, or some physical activity?
- Have some down time before doing homework or chores.
- Offer understanding and empathy, rather than punishment/discipline for any unexpected behaviour ☺ ☺
- As always, respond as best you can with the energy and resources you have.



NEWSLETTER

Team Kids

WHAT'S BEEN HAPPENING

Last week we recognized all the important women in our lives for International Women's Day. The children shared special things about these women and made an assortment of crafts. We also received some gifts at TeamKids including flowers and chocolate which was very kind!

This week the children have been enjoying engaging in a range of club activities including STEM, Art and Cooking. A highlight from this week for the children was creating galaxy art using black foam boards and bright coloured paints and crayons. This experience expanded upon the children's fine motor skills and knowledge of space.

We are continuing to explore expected behaviour incentives that we can implement at the program. This week, we have reminded the children of the monthly raffle and decorated our raffle ticket container. At the end of the month, we will draw out 3 names from the jar and these children will have the opportunity to choose from educational resources such as craft materials, books, self regulation toys and more.

TEAMKIDS CLUBS


MONDAY

BSC:

ASC: Super Sports 

TUESDAY

BSC:

ASC: Art 

WEDNESDAY

BSC:

ASC: Cooking 

THURSDAY

BSC:

ASC: STEM 


FRIDAY


BSC:


ASC:

BSC: BEFORE SCHOOL CARE | ASC: AFTER SCHOOL CARE

IMPORTANT DATES

 Wednesday 19th March | Harmony Week Party in After School Care (Bookings required)

 Thursday 20th March | International Day of Happiness

 Saturday 22nd Mar 2025, 8:30 pm – 9:30 pm | Earth Hour



Service Mobile: 0432 096 335

Office Phone: 1300 035 000

Service Email: KeysboroughGardensPS@teamkids.com.au

Head Office Email: info@teamkids.com.au

KEYSBOROUGH



JUNIOR FOOTBALL CLUB

Auskick open afternoon at

KGPS!

Prep- Grade 2

(5-7 years).

Boys and girls welcome

**Join us for an exhilarating free
Auskick session on Friday,
March 28th, from 3:30 to 4:30
PM on the KGPS oval.
We can't wait to see you there!
Please share your enthusiasm
with us at the office—we'd love
to know you're coming!**



Communication with school staff

Our staff now have the right to enjoy their evenings and weekends without being expected to respond to messages or emails.

Teachers and Education Support staff are not required to reply to phone calls, emails, or Compass messages from parents or students after 5pm or on weekends.

We ask that families understand and respect these boundaries.

Any non-urgent communication will be answered within 2 working days, and urgent matters will be addressed within 24 hours or the next working day.

For urgent matters please call the school between 8:30am and 4:00pm

Thank you for your understanding and support!

Mobile Devices

All phones bought to school must be switched off and given to teachers for safe keeping.

This includes any device that may connect to or have a similar functionality to a mobile phone such as a smart watch.

Smart watches must have their internet connectivity switched off during school times.

When a student is not complying with this mobile phone policy, we will be required to follow a process in line with our existing student engagement policies.

[Mobile phone Policy](#)



Facebook

Please like our Facebook page. This page is used by the school to share events and updates at the school.

[KGPS Facebook](#) and Instagram.

Any other Facebook pages are not officially authorised by representatives at the school.

Breakfast Club

Our Breakfast Club is open on Tuesday and Thursday from 8:30 am at the Canteen.

Come along!



Lost Property

Please name all clothing so we can return it to you if it ends up in Lost Property.



Early Arrival at school

There is NO supervision for students before 8:40am

For your child's safety

- Stay with your child until 8:40am
- Or, book them into TeamKids



Student Safety

Medication

If your child requires medication during the school day, a Medication Authority form must be signed by the parent/carer. Please contact the office.

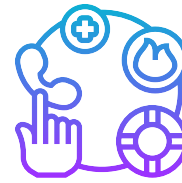
Students cannot administer medication themselves (except older student requiring Ventolin).



Contact Details

It is important the school has your most current phone, home and email details.

If you change any details please tell us as soon as possible.



TeamKids

TeamKids is our Before & After School Provider.

The hours of operation are:

Before School Care: 6:45am to 8:45am

After School Care: 3:30pm to 6:30pm

After School Care: 3:00pm to 6:30pm (Wednesday)

Holiday Programs run each term holiday
You can book on TeamKids Keysborough Gardens



Uniform Reminders

The wearing of uniform is compulsory at Keysborough Gardens Primary school.
All our uniform can be purchased at PSW, Unit 1, 9-11 South Link, Dandenong South, 3157 or
online [click here](#)



polo shirt



long sleeve shirt



jumper



zip up jacket



bag



shorts



pants



skort



summer dress



broad brim hat



school beanie



winter tunic



white skivvy



navy or white socks



navy tights



black shoes or
runners

These items are not permitted as part of our uniform

